

Facial Paralysis Smart Glasses



吕飞霄



电子信息工程系

大三EE班

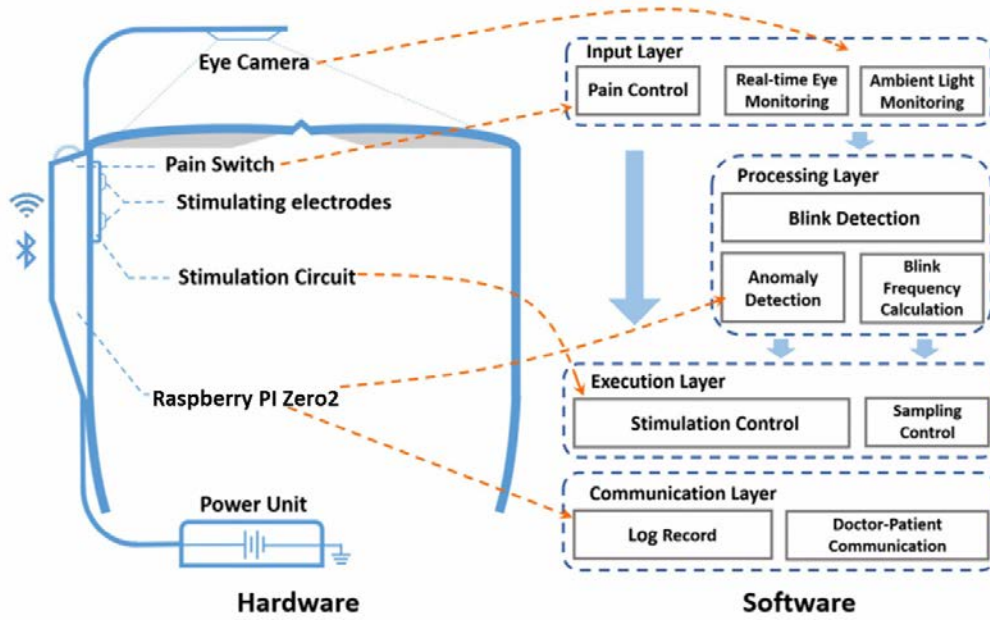


Back ground

Facial paralysis

Smart Glasses

wireless



Software

Hardware

design

Hardware

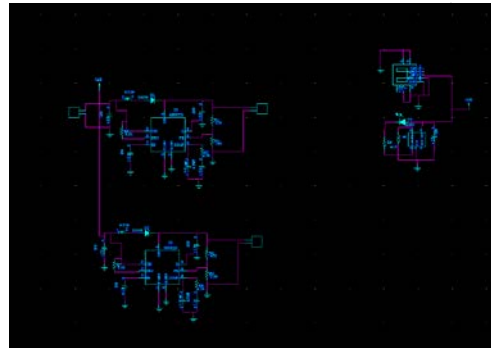
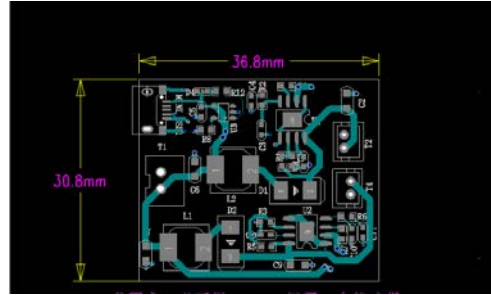
My solution



Core computer

Camera

Circuit



Future work

make the one eye's Calibration instead of the two eyes' calibration.

Direct the Raspberry pi

3DP a suitable glasses



Thank's

THANK' S

